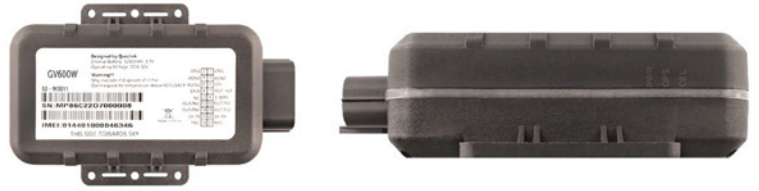




MONDO TRACKING

GV600 Series Quick Start

Page 1 : Basic Operation



1

Check Parts List

The USB Data_Cable_M is just for sample test only. In mass production, there is only an 18-pin cable for the device.



2

Install the SIM card.



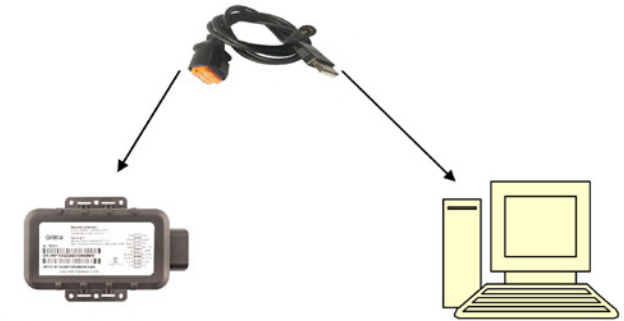
3

Connect the GV600 series to external power supply for battery charging.



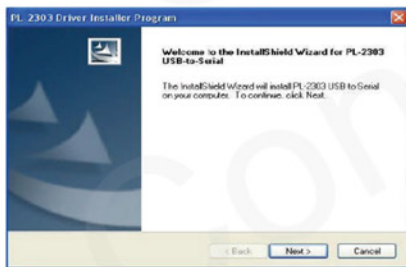
4

Connect GV600 Series to computer by the USB cable for configuration.



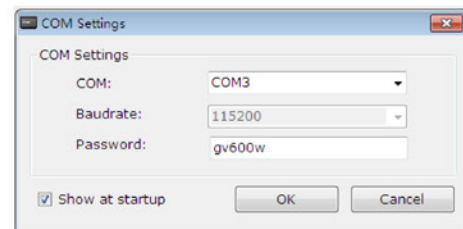
5

Find "PL2303_Prolific_Driverinstaller_Vxxxx" and choose the suitable driver for your computer system. If you have already installed it, please go to Step 6.



6

Find "Quealink GV600 Series_Manage_Tool_Vx.x.exe" in develop suit and run it to configure the running parameters of GV600 Series. Please refer to Page 2 for details.



7

It is better to place the GV600 Series under the open sky, and let the surface which has tag face the sky.



8

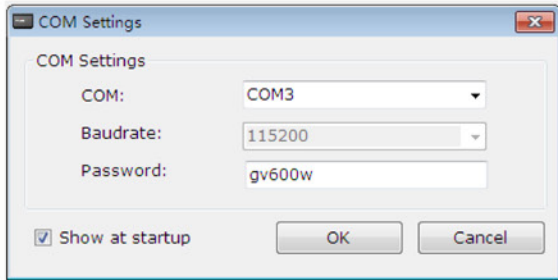
Use the 18-pin wire harness to connect the device to the car.



Page 2 : PC Manage Tool Quick Start

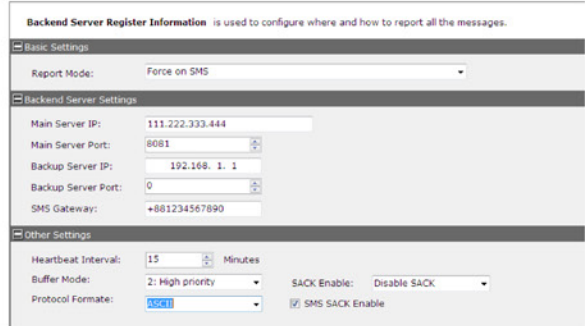
1

Run manage tool. Select correct COM port and input default password. Then press OK.



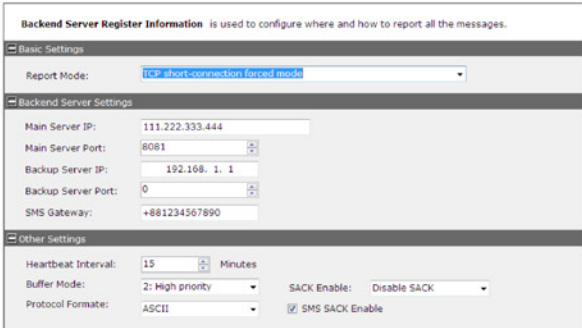
2

If you want to test the GV600 Series by SMS, set "Report Mode" to "Force on SMS" and input the phone number which you want to receive the SMS from GV600 Series. After that you can go to Step 6. Otherwise please go to Step 3.



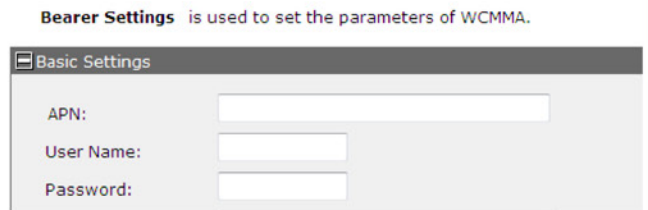
3

Set "Report Mode" to "TCP Short Connection". Input the IP address and port number of the backend server. Please make sure the IP address can be accessed by internet and the data sent to this address can be received.



4

Please contact your SIM card provider and get the user information for network. Input it in GTBSI setting.
Note: APN can't be empty.

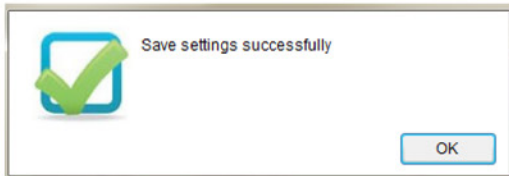


5

Press the "Send" button to update the parameters of GV600 Series. Then the GV600 series can report information to your backend server or SMS receiver.
Note: These commands can also be sent to GV600 Series by SMS.

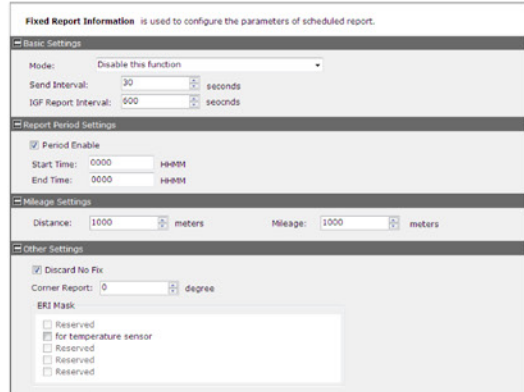
AT+GTBSI=gv600w,3gnet,,,cmnet,,,2,0000\$

Command has been accepted when you see the success window.



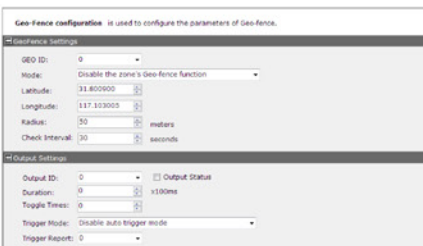
6

Set the parameters of fixed timing report so that the GV600 Series will report its position to backend server periodically. Press "Send" button to update the parameters.
Following screen shot shows how to configure the GV600 Series to report its position every 3 minutes.



7

The following screen shot shows how to create a Geo-fence. Press "Send" button to update the parameters.



After these steps, GV600 Series will have some basic tracking functions such as fixed timing report and Geo-Fence. For other advanced functions of GV600, please refer to "GV600 Series @Tracker Air Interface Protocol" or visit our website.

www.mondotracking.com

sales@mondotracking.com

+1 (954)353-5233